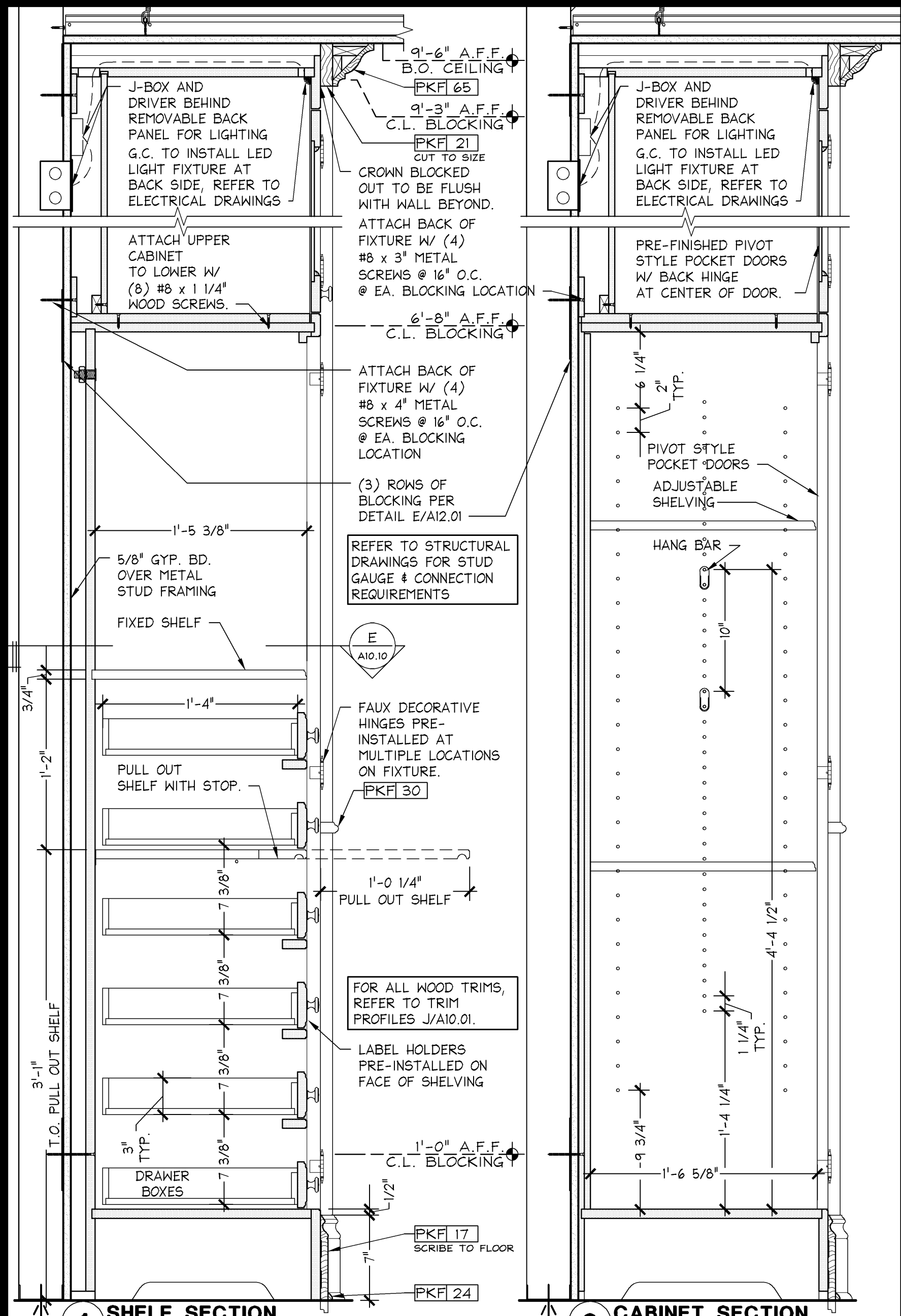


**BUILT-IN BRA WARDROBER VERTICAL SECTION**

1 1/2" ± 1'-0"

05D-A1010-L00-DET1

04.04.14

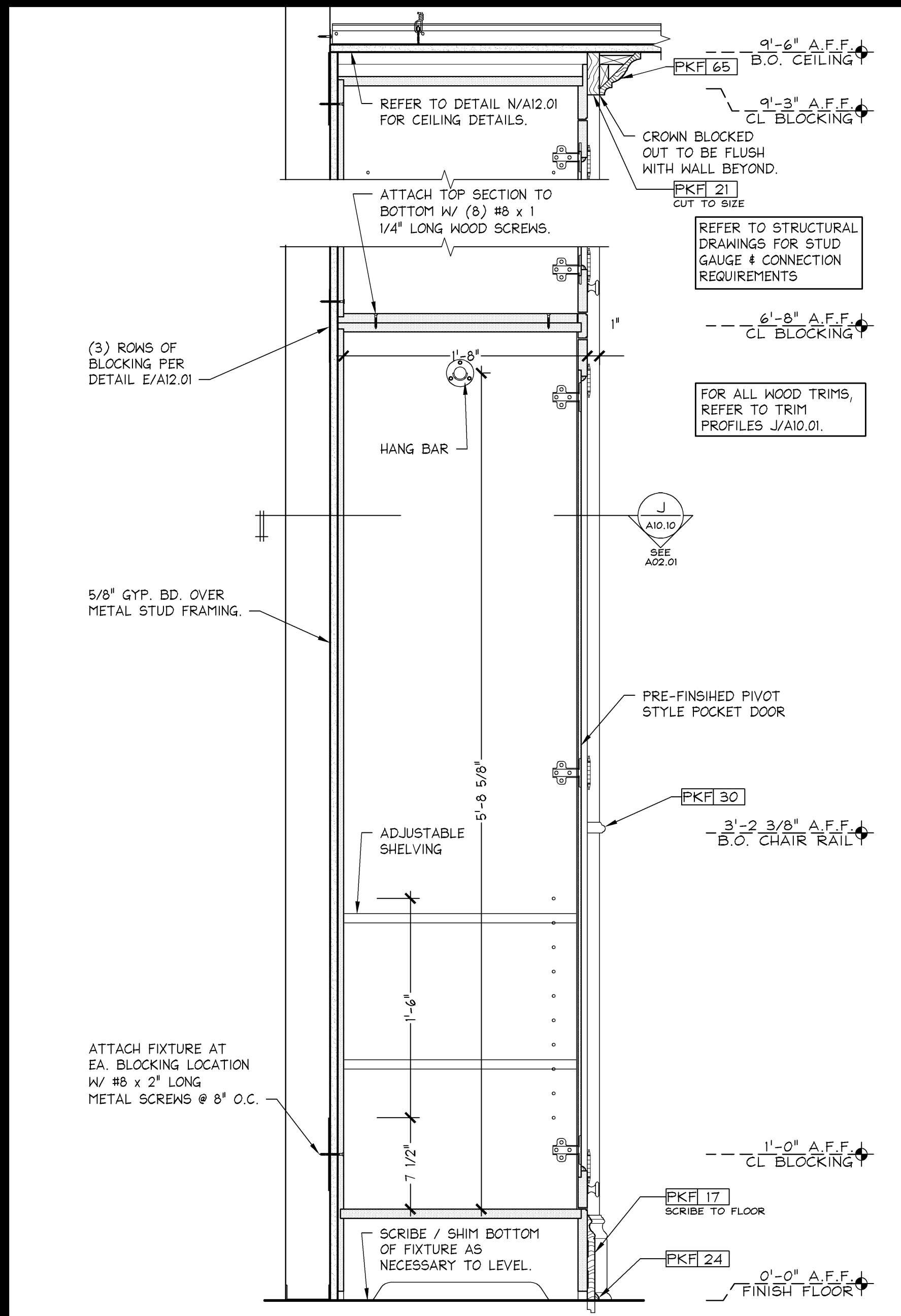


**OUTFITTING CENTER SECTION**

1 1/2" ± 1'-0"

05D-A1010-G00-DET1

04.04.14

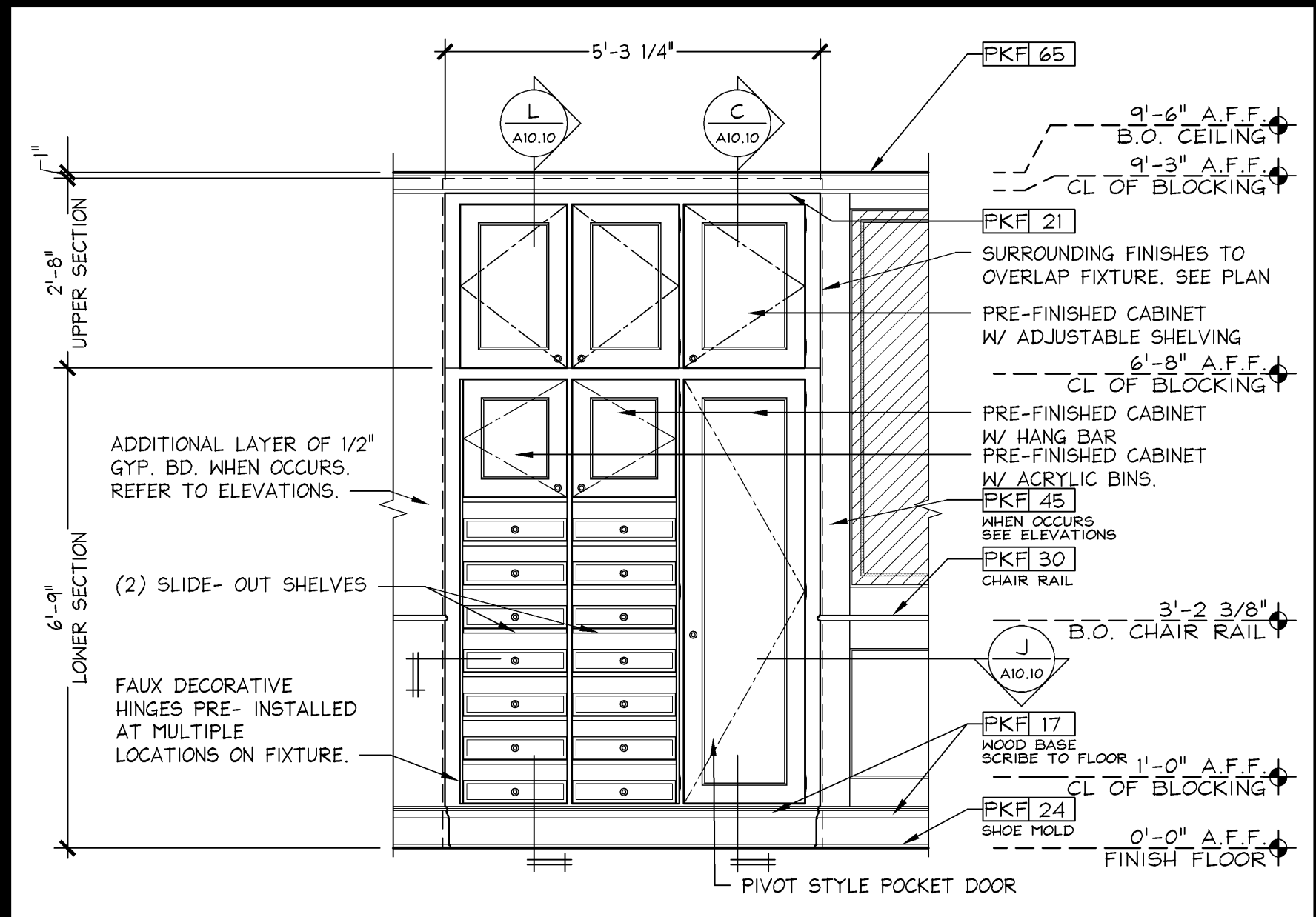


**GO BACK CLOSET SECTION**

1 1/2" ± 1'-0"

05D-A1010-C00-DET1

04.04.14

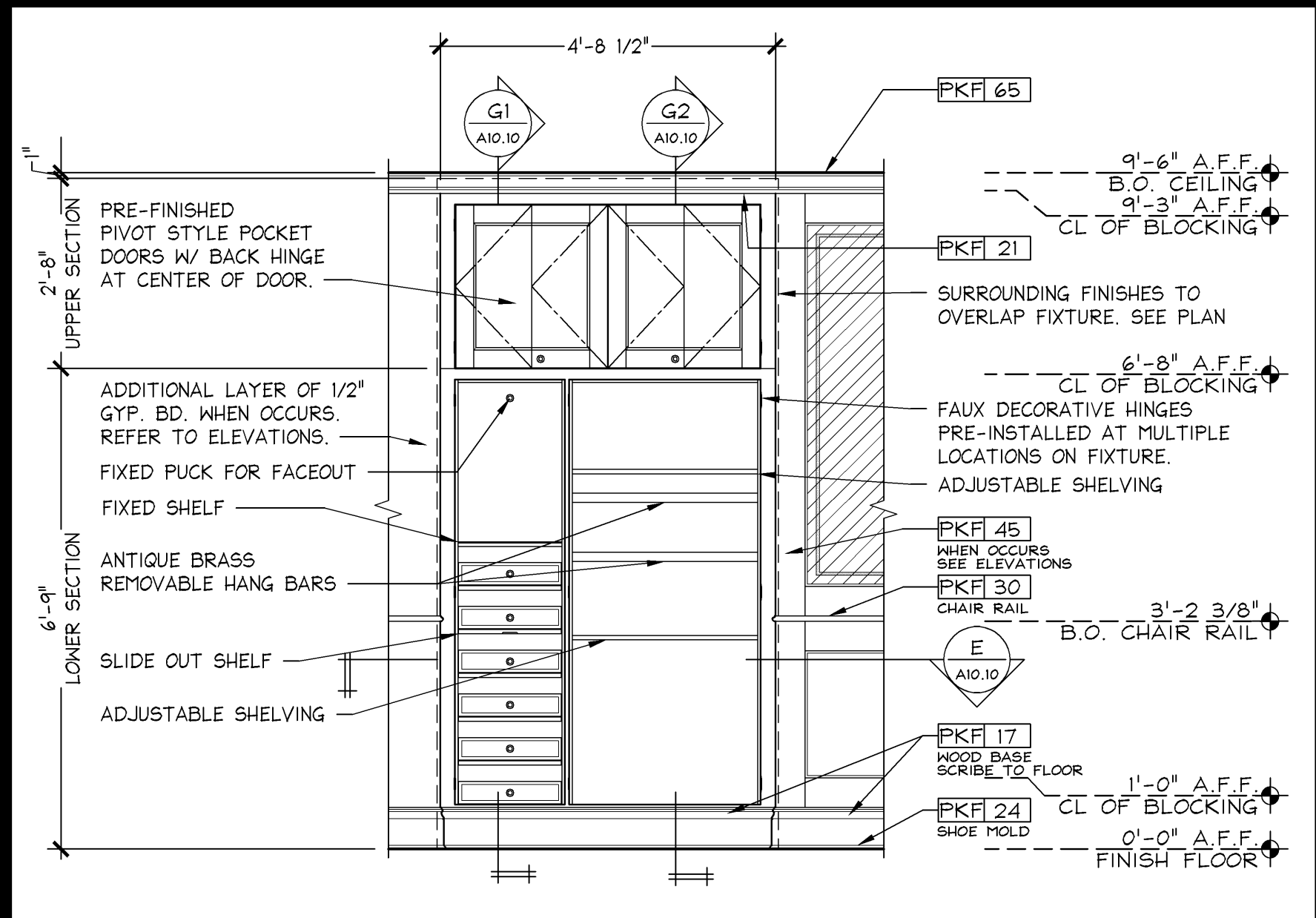


**SMALL BUILT-IN BRA WARDROBER WITH GO BACK CLOSET ELEVATION**

1/2" ± 1'-0"

05D-A1010-K00-DET1

04.04.14

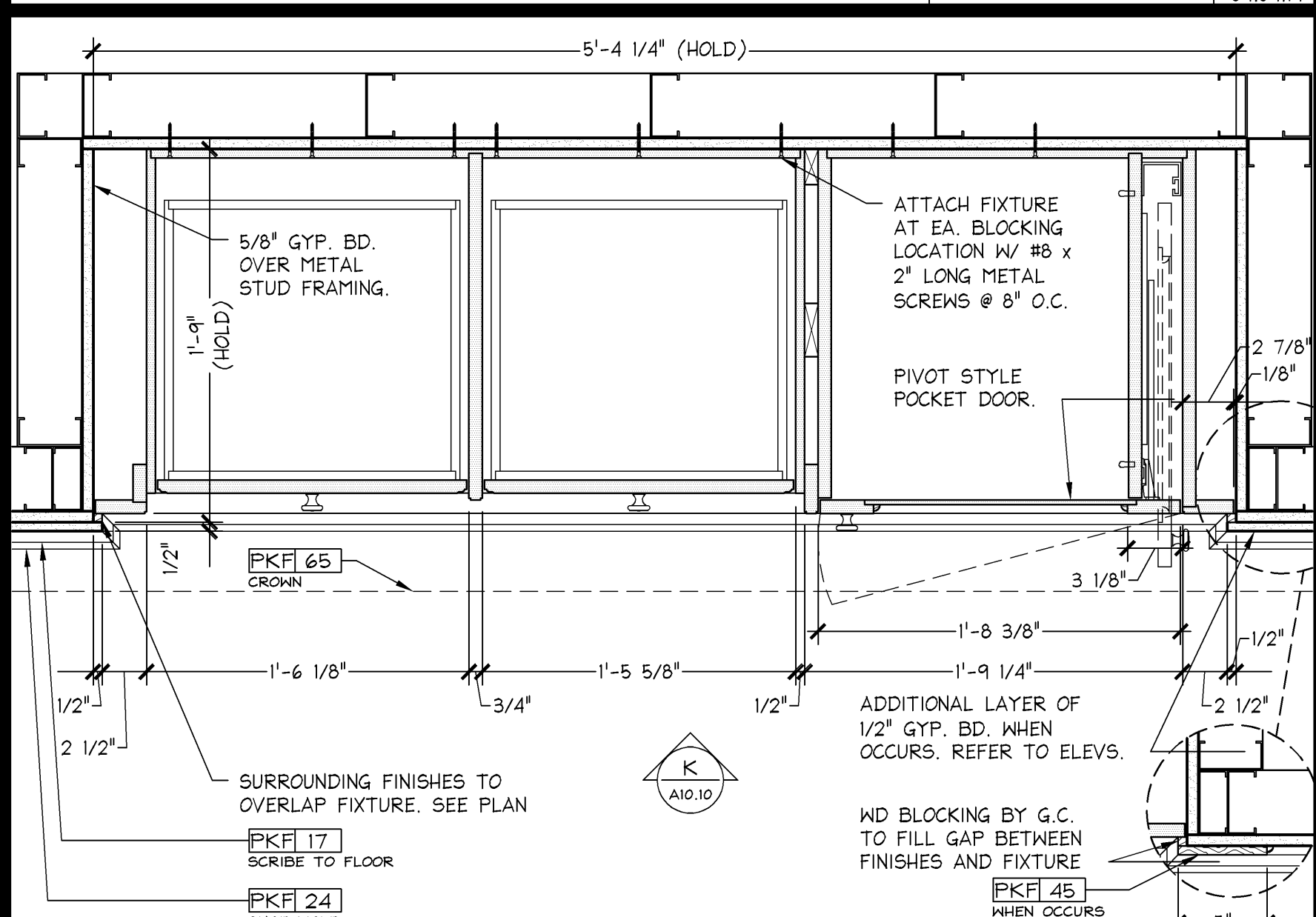


**OUTFITTING CENTER ELEVATION**

1/2" ± 1'-0"

05D-A1010-F00-DET1

04.04.14

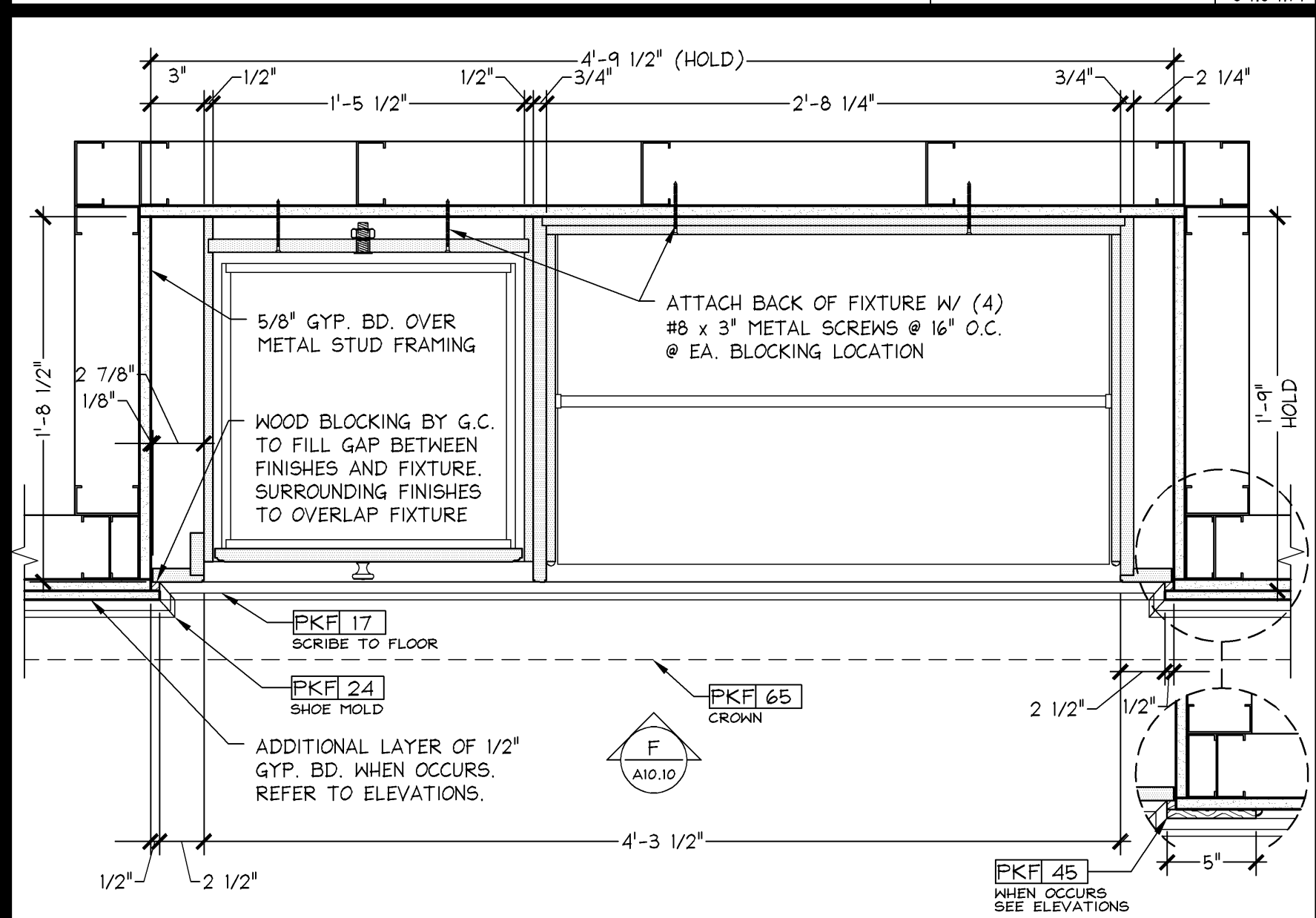


**SMALL BUILT-IN BRA WARDROBER WITH GO BACK CLOSET PLAN SECTION**

1 1/2" ± 1'-0"

05D-A1010-J00-DET1

10.28.13



**OUTFITTING CENTER PLAN SECTION**

1 1/2" ± 1'-0"

05D-A1010-E00-DET1

10.28.13

**GreenbergFarrow**

1430 West Peachtree Street NW  
Suite 200  
Atlanta, GA 30309  
t: 404 601 4000 f: 404 601 3970

**Limitedbrands**

LIMITED STORE PLANNING, INC.  
d/b/a STORE DESIGN & CONSTRUCTION

Three Limited Parkway • Columbus, Ohio 43230  
Telephone: 614.415.7000 • Fax: 614.415.7349

PROJECT INFORMATION:

010501726

**PINK VICTORIA'S SECRET**

FAYETTE MALL  
3401 NICHOLASVILLE RD  
SPACE # 1-904  
LEXINGTON, KY 40503

SCOPE: LS&C PROJECT #:

NEW PACKAGE: 151534  
PINK GENERATION: 20140534  
I/A/E PROJECT #:

REVISIONS:

REQUIRED BY: DATE

ELITE CONSTRUCTION GROUP  
LAKE JACKSON, TX  
PHONE: 979-285-0712  
NOTE: THESE PRINTS HAVE BEEN  
REDUCED BY 50 PERCENT SCALE  
WILL BE 50 PERCENT OF WHAT IS  
NOTED ON PLANS

DATE ISSUED: 09-05-2014  
DESIGNED BY: APL  
DRAWN BY: AS  
CHECKED BY: AD

**PINK FITTING ROOM DETAILS**

DRAWING NUMBER:  
**A10.10**